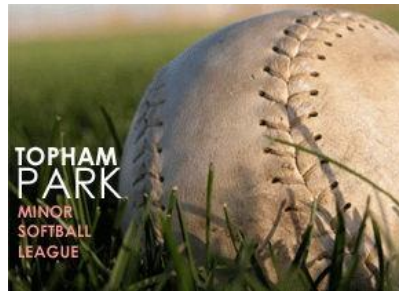




Topham Park Minor Softball League  
Code of Conduct  
2020



## **Introduction**

Topham Park Minor Softball League will continue to implement the **Respect My Game Program** developed by Softball Ontario for our 2020 season, as a method for dealing with abuse in our sport. **Our Code of Conduct and Zero Tolerance Policy** for abuse applies to ALL players, coaches, parents, spectators, umpires, officials (league executives, grounds crew, scorekeepers & convenors) and volunteers.

The following pages outline the mission statement of the Respect My Game Program as well as our Code of Conduct and Zero Tolerance Policy. At the end of this document you will find an outline of the **Top Ten Misunderstood Rules of Softball** which often lead to coach and official abuse. Our policies will continue to be reviewed on a regular basis, in accordance with Softball Ontario policies. You are always welcome to request further information by emailing us at [info@tophampark.com](mailto:info@tophampark.com). If you wish to learn more about the Respect My Game Program, please click the link to be directed to their website <https://softballontario.ca/missionstatement/>. We will continue to advise by e-mail, our website, newsletter and social media (Facebook, Twitter & Instagram) of any changes occurring to this policy.

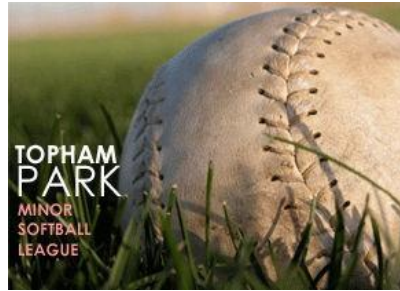


### **Respect My Game Program Mission Statement**

“...to educate stakeholders in softball, thereby creating awareness of abuse in the game and building mutual respect among its participants, while introducing zero tolerance policies to reduce abusive situations at all levels in all components of the game, thus reversing the decline in leadership within the sport.”

### **Respect My Game Program Values**

- Competition should demonstrate high standards of ethics and sportsmanship, and promote the development of good character and other important life skills
- The highest potential of softball is achieved when all of the participants are committed to the following core principles:
  - Trustworthiness involves integrity & honesty
  - Respect is what we show each other through sportsmanship
  - Responsibility is being accountable and prepared
  - Fairness is making sure that everyone competes honorably
  - Caring is showing compassion for each person’s role
  - Civility is having consideration for others while playing the game
- By setting high standards of excellence for our own performance on the athletic stage, our sport can model the same pillars of character that we ask others to model



## TPMSL Code of Conduct

### Players Code of Conduct

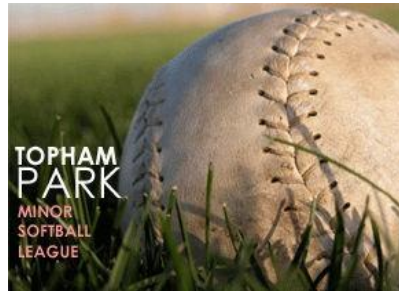
#### **I Will:**

- Play by the rules
- Never argue with the officials\* but will comply with the umpire's decisions with dignity
- Control my temper
- Be a good sport
- Treat all players as I would like to be treated
- Co-operate with my coach, teammates, opponents & umpires for without them we wouldn't have a game
- Accept responsibility for my actions
- Participate within the competitions conditions and rules & in the spirit of fair play
- Refrain from offensive or abusive language or gestures
- Refrain from making derogatory or demeaning remarks about any athlete, coach, umpire or participant
- Not tolerate, participate in or respond to acts of abuse, disrespect or aggression
- Remember that, as humans we all make mistakes

#### **I Will Not:**

- By my actions support the abuse of any other player, coach, umpire, spectator or any other official

\*The term 'Officials' refers to league executives, scorekeepers, grounds crew & convenors. The term 'Umpire' refers to on-field officials assigned to officiate the game.



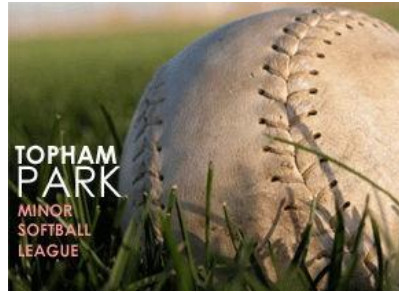
### **Coaches Code of Conduct**

#### **I Will:**

- Teach my players that rules of the game of softball are mutual agreements that no one should evade or break
- Develop team respect amongst each other and others as well as for the judgments made by the umpires and opposing coaches
- Be professional in my manner and accept responsibility for my actions by displaying high standards in language
- Display control, respect, dignity and professionalism to all involved with the game including opponents, coaches, officials, umpires, spectators and encourage team members to do the same
- Operate within the rules and the spirit of the game
- Abide by and respect the regulations governing softball, the organization and the individuals administering those regulations
- Be a positive role model for softball and my athletes
- Always respect game officials and umpire's decisions

#### **I Will Not:**

- Engage in or tolerate, offensive, insulting or abusive language or behavior to any other participant in the game of softball



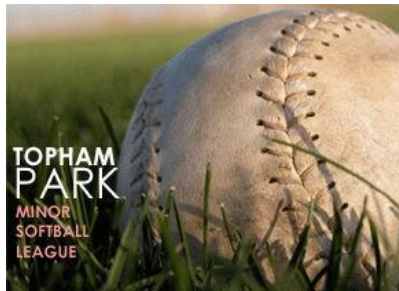
### **Administrators (Executive) Code of Conduct**

#### **I Will:**

- Ensure that parents, coaches, spectators and participants understand their authority and their responsibility for fair play in softball
- Be fair, considerate and honest in all dealings with others
- Be professional and accept responsibility for my actions. My language, presentation and manners will reflect high standards
- Demonstrate a high degree of individual responsibility when dealing with persons under 18 years of age
- Resolve conflicts fairly and promptly through consistent and established procedures
- Maintain fairness and strict impartiality
- Be a positive role model for others
- Treat all individuals with dignity and respect while recognizing differences of opinion and experience

#### **I Will Not:**

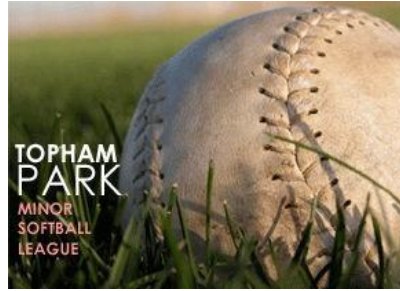
- Discriminate against any other participant in softball
- Use economic methods to wrongfully exclude someone



### Umpires Code of Conduct

#### **I Will:**

- Place the safety and welfare of players above all else while showing concern and caution towards sick and injured players
- Prepare myself both physically and mentally for my role
- Be impartial, consistent, objective and courteous when making decisions
- Accept responsibility for my actions and decisions
- Accept responsibility for promoting respect for all participants in the game of softball
- Be a positive role model in behavior and personal appearance and ensure my comments are positive and supportive
- Be a good sport because I understand that actions speak louder than words
- Always respect, remain loyal to and support other officials
- Keep up to date with the latest 'Laws of the Game' trends and principles of their application
- Display superior communication skills both verbal and non-verbal
- Refrain from any form of personal abuse towards players, coaches and other officials
- Respect the rights, dignity and worth of all people involved in the game, regardless of their gender, race, religion, ability or cultural background



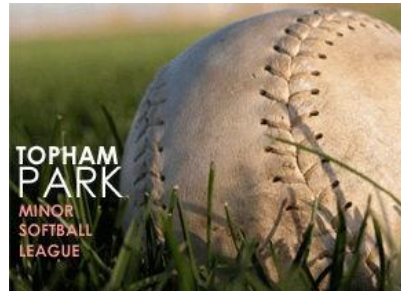
### **Spectators Code of Conduct**

#### **I Will:**

- Be on my best behavior and use appropriate language when communicating with players, coaches, umpires and/or officials
- Respect the official's decisions and teach young people to do the same
- Encourage players to always play according to the rules
- Support all efforts to remove verbal and physical abuse from softball
- Condemn the use of violence in any form, whether it is by spectators, coaches, officials or players
- Respect the rights of every participant in softball regardless of their gender, race, ability, cultural background or religion

#### **I Will Not:**

- Publicly question the umpires or official's judgment and/or honesty
- Use violence, harassment or abuse



Topham Park Minor Softball League has adopted the following definition of abuse:

**Definition of Abuse:**

Abuse can be defined as any behavior by any person towards another, which a person knows or should have reasonably known, is unwelcome. This behavior includes comments, conduct or gestures which are insulting, intimidating, humiliating, hurtful, degrading, or offensive to an individual and which creates an uncomfortable environment, or which might be expected to cause embarrassment, insecurity, discomfort, offense, or humiliation to another person including, but not limited to:

**Threat:**

Declaration of an intention or a determination to inflict harm on another.

**Physical Abuse:**

Abuse involving contact that is intended to cause feelings of intimidation, pain, injury, or other physical suffering or harm.

**Verbal Abuse:**

Unwelcome remarks, jokes, innuendoes, or taunting about a person's body, sexual orientation, age, marital status, ethnic or racial origin, religion, etc.

**Gestures:**

Leering or other suggestive/obscene mannerisms.

**Patronizing:**

Behavior which undermines self-respect or working conditions.

**Visual:**

Displaying sexually explicit, racist or other offensive or derogatory material, sexual, racial, ethnic or religious graffiti.



**Practical Jokes:**

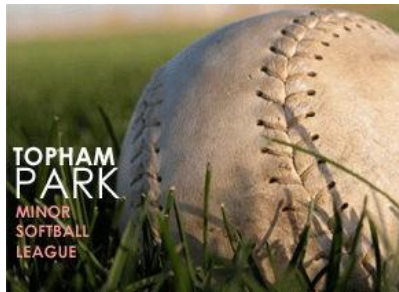
Which cause awkwardness or embarrassment, and which endanger a person's safety or negatively affect one's performance.

**Harassment:**

False accusations motivated by malice or mischief and intended to cause harm or embarrassment.

**Sexual Harassment:**

Conduct, comments, gestures or contact of a sexual nature that is likely to cause offense or humiliation, or that may, on reasonable grounds, be perceived as placing a condition of a sexual nature on employment or any opportunity for selection, training or advancement.



### **Disciplinary Action Recommendations**

The League will follow the following recommendations when there are incidents of abuse either by and/or against an official, coach, player, umpire or spectator. The penalties are consistent with recommendations for all Softball Leagues in Ontario set out in the Respect My Game Program.

#### **Obscene or vulgar language on or around the playing field:**

- Conversational language, gesture or behavior deemed inappropriate
- Applies to ALL persons including spectators and game officials

#### **Verbal abuse directed at someone other than a game official:**

- Abusive language directed at a player, coach, parent or spectator on or around the playing field by anyone in attendance
  - This includes heckling, poking fun at or in any other manner doing anything that in the opinion of the umpire distracts the opposing team

#### **Actions:**

- 1<sup>ST</sup> offence – warning by umpire
- 2<sup>nd</sup> offence – suspension for remainder of game
- 3<sup>rd</sup> offence – appear before executive committee with potential suspension of three games

#### **Alcohol or illegal drugs on or around the playing field:**

- The act of carrying and/or consuming alcoholic beverages or illegal drugs on or around the playing field
- Applies to ALL persons including spectators and game officials

#### **Verbal abuse directed at a game official:**

- Abusive language directed at a game official

#### **Physical abuse directed at someone other than a game official:**

- The act, attempt or threat of physical contact (e.g. pushing, pulling, charging, spitting, etc.) directed at a player, coach, parent or spectator on or around the playing field by anyone in attendance



**Actions:**

- 1<sup>ST</sup> offence – suspension for or removal from park for remainder of game
- 2<sup>nd</sup> offence – appear before executive committee with potential suspension of three games
- 3<sup>rd</sup> offence – suspension for the remainder of the season

**Physical abuse directed at a game official:**

- The act, attempt or threat of physical contact, directed at a game official on or around the playing field by anyone in attendance

**Actions:**

- 1<sup>ST</sup> offence – suspension for or removal from park for remainder of game
- 2<sup>nd</sup> offence – appear before executive committee with potential suspension of six games
- 3<sup>rd</sup> offence – suspension for the remainder of the season with a potential for lifetime suspension

**Violent physical assault directed at any individual:**

- The deliberate act of assaulting any individual in attendance in a violent manner (e.g. punching, swinging a bat, etc.)

**Actions:**

- 1<sup>st</sup> offence – appear before executive committee with potential suspension of six games
- 2<sup>nd</sup> offence - lifetime suspension from the league

**Sexual Harassment:**

- Any act by anyone to take advantage of a person for his/her own sexual stimulation or gratification

**Action:**

- The League Executive shall immediately investigate the allegation and if necessary notify police
  - If the offense requires a meeting with the Executive Committee, the committee will consist of a minimum of three elected executive members, including the League President, the League Vice President, the Head Convenor, The Umpire in Chief or a Deputy Umpire in Chief, or a Convenor associated with the incident. The action will be reviewed with the offender, and a decision will follow the meeting. The offender will be notified in writing of the Executive Committee decision. All decisions will be based on the information provided above

## Promoting and Teaching Compliance

### Top Ten Rules to Cover with Coaches and Parents

These ten rules have been selected as rules for which there are many common misconceptions. These misconceptions then lead to many forms of abuse whether it be heckling from the fans who misunderstand (or don't agree with) the rule or verbal abuse from coaches and/or players, etc.

#### **1. Left hand turn from first.**

A runner forfeits his/her exemption from liability to be put out if, after overrunning first base, he/she makes an attempt to run to second base.

The key to this rule is 'continues to second base'. There must be at least an attempt towards second base. It does not matter which direction the batter-runner turns after reaching first base if he/she is coming back to first base without attempting to advance to second base.

#### **2. Check swing.**

If it is the plate umpire's judgment that the batter made an attempt to swing at the ball (but not a full swing), the plate umpire shall call the pitched ball a strike. This call is NOT to be appealed to the base umpire; use the guiding principle that the plate umpire does not call it a strike unless he/she saw the attempted swing and then there is no need for an appeal of what the plate umpire saw.

However, if the batter attempted to swing at the ball and the plate umpire did not see the attempt (perhaps blocked out by the catcher), then a ball shall be called. With this call, the plate umpire does have the opportunity to check with his/her base umpire(s) with or without a request from the defensive team. The plate umpire may make the request on his/her own, or may choose to make the request when requested to do so by the defensive team. The key to the base umpire is that he/she shall only answer a check swing request made by the plate umpire; they do not respond to a request made directly to them by a defensive player.

Should the base umpire see the attempt that the plate umpire did not see, he/she shall respond by calling 'Yes' and the call shall be changed from a ball to a strike.



### **3. Award of bases on overthrow.**

The common misconception with this rule is the old rule of 'one plus one', a rule that was changed long ago.

The correct ruling is that when a thrown ball goes out of play (beyond the established boundary lines of the playing field)

- All runners, including the batter-runner, shall be awarded two bases from the last base legally touched, based on their position at the time that the thrown ball left the fielder's hand
- If there are two runners between the same bases, the award is based on the position of the lead runner

Keys to remember with this rule:

- The award is based on their position at the time the throw was made, not at the time that the ball went out of play – watch that very long overthrow from the outfield
- The award is two bases from the last base legally touched – if a runner is returning to first base to tag up a fly ball, he/she will still be awarded two bases which is second base and third base because the last base that he/she had legally touched was first base

The proper mechanic for this situation is to call "Dead Ball" as soon as the ball goes out of play, then award the bases accordingly. Your award should be swift and decisive. With multiple runners or a long overthrow, if you have any doubt, consult with your fellow umpire(s) immediately before the award and get it right the first time.

#### **4. Batted ball hitting home plate, first, second or third base.**

##### Home Plate

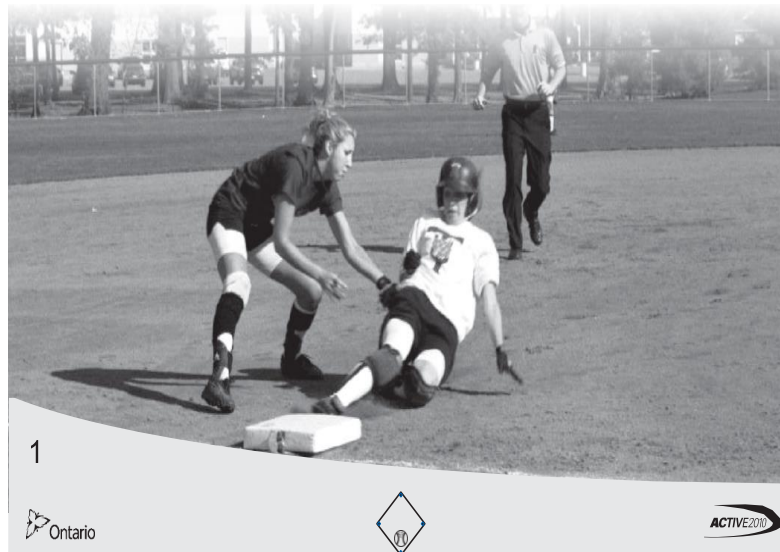
- A batted ball remains alive and in play when it strikes home plate – this is a common misconception – many, many years ago when a batted ball struck home plate it was declared a dead ball
- In the event that a batted ball comes to rest on home plate, it shall be ruled a fair ball and the plate umpire shall signal accordingly – remember, the fair/foul lines come to the back point of home plate so the plate is completely in fair territory

##### First or Third Base

- When properly installed, first and third base are positioned on the diamond completely in fair territory. A smart umpire looks around between pitches to ensure this is always true. Once a batted ball strikes first or third base without having been first touched by a player, the batted ball shall be ruled a fair ball regardless of where the ball ends up
- Once the ball touches first or third base it does not have to pass the base; touching the base is all that is required to make it a fair ball. The plate umpire should signal fair ball immediately once the batted ball strikes the base

##### Second Base

- Once a batted ball strikes second base without having been first touched by a player, the batted ball shall be ruled a fair ball





### **5. Batter stepping on Home Plate or Mat or directly in front of Home Plate or Mat.**

#### Stepping on Home Plate or Mat

- The batter is out if any part of the foot is touching home plate or touching the mat when the bat contacts the ball
- The ball is dead and runners may not advance on the play

#### Stepping directly in front of Home Plate or Mat

- The batter is out if the foot is completely outside the lines of the batter's box and touching the ground when the bat contacts the ball; therefore, if the batter's foot is completely in front of home plate the foot is obviously completely outside the lines of the batter's box
- The batter is out if the foot is completely in front of or behind the mat touching the ground when the bat contacts the ball
- The ball is dead and runners may not advance on the play

#### Points of Emphasis:

- There is no penalty unless the batter makes contact with the ball
- The position of the foot must be judged at the time the bat makes contact with the ball; if the foot is in the air and then comes down on the ground after the ball is hit, there is no penalty
- With the exception of the foot touching home plate or touching the mat, the foot must be completely outside the lines of the batter's box; touching any part of the lines is acceptable because the lines are part of the box
- The same penalty applies whether the batted ball is fair or foul; "Dead Ball" is called as soon as the batter makes contact with the ball

### **6. Fair ball bouncing out of play or off a defensive player.**

When a fair ball bounces out of play or it deflects off a defensive player, the umpire shall declare "Dead Ball" as soon as the ball goes out of play

- All runners shall be awarded two bases
- The award is based on their position at the time of the pitch, not at the time that the ball went out of play
- The award is the same regardless of where the ball actually goes out of play
- Be prepared that this rule could actually end up bringing runners backwards
- If a long rolling ground ball goes out of play and the batter is already passed second base, the batter goes back to second base
- On the same play if a runner starting at first base has already passed third base and on his way to score when the batted ball goes out of play, the runner is returned to third base





### **7. Infield Fly.**

Requirements for an Infield Fly:

- Runners on first and second bases OR first, second and third bases
- Fewer than two out
- Not a bunt
- Not a line drive
- Can be caught by an infielder with ordinary effort, including the pitcher, catcher and any outfielder positioned in the infield

What should the umpire do?

- In an infield fly situation, prior to the first pitch of the at bat, the umpires should give the infield fly signal to each other
- When it becomes apparent that a batted ball is an infield fly (typically when the ball reaches its highest point) the plate umpire shall declare "Infield fly... if fair... batter is out"

Once an Infield Fly is declared:

- If the hit becomes a foul ball, no penalty, treat like any other foul ball
- The batter is out regardless of whether the ball is caught or not
- The ball remains alive
- The runners may advance at their own risk
- If the fly ball is caught, runners must tag up
- If the fly ball is not caught, runners can choose to advance but because the batter has already been declared out, there is no force play and runners proceed with the risk of being put out





**8. Lead off (Pitcher's Circle) – FP only.**

The Pitcher's Circle is the area within an 8' radius of the pitcher's plate; the lines are considered to be within the circle.

The common misconception is that if the ball is thrown back to the pitcher and he/she has it in his/her possession in the pitcher's circle before the batter-runner reaches first base that the batter-runner must stop at first base.

Even though the ball may be in the pitcher's possession in the pitcher's circle, the batter-runner may:

- Continue past first base
- Is entitled to run towards second base, as long as he/she does not stop at first base
- Once the runner makes a stop, he/she must immediately proceed to the next base or return to the previous base UNLESS the pitcher makes a play (including a fake throw) on the runner or another runner

If the runner stops and simply stands there, off the base, while the pitcher has possession of the ball in the pitcher's circle and no play is made, the umpire shall declare "Dead ball, runner is out... lead off."

If the runner stops and then makes a move in more than one direction immediately after the stop while the pitcher has possession of the ball in the pitcher's circle and no play is made, the umpire shall declare "Dead ball, runner is out... lead off."

Points of Emphasis:

- The pitcher cannot force the first stop by a runner merely by having possession of the ball in the pitcher's circle
- Put another way, the runner is allowed one stop; as soon as he/she stops, he/she must take a decision immediately to either advance or return
- A play on the runner (including a fake throw) nullifies any penalty; put another way, every fake throw allows the runner one more stop





### **9. Difference between Interference/Obstruction**

Interference:

- Is typically an act by an offensive player
- Can also have umpire interference and spectator interference
- Results in "Dead Ball" being called (exception – umpire interference)
- Results in an out if by an offensive player
- A common misconception – there is no such thing as a catcher's interference, it is catcher's obstruction

Obstruction:

- Is an act by a defensive player
- Results in a delayed dead ball
- Does not entitle the obstructed runner to keep attempting to advance until played upon
- Award is determined at the end of the play (exception – if the obstructed runner is called out)

These two rules require:

- An immediate call when either interference or obstruction occurs; do not hesitate, these are not the type of calls to be made after the fact
- Be decisive in your call
- Contact does not always mean interference or obstruction occurred
- There is such a thing as incidental contact - 2 players both unsure of where to go and contact is made

Rule 8.10(c) The runner is not out when more than one fielder attempts to field a batted ball and the runner comes in contact with the one who, in the umpire's judgment, was not entitled to field the ball.

TIP – when contact occurs and in the umpire's judgment neither interference nor obstruction occurred, make a "SAFE" signal with no verbal call; this shows that you saw the play (contact) and you made your decision that no call was necessary.



### **10. Double Base.**

The Double Base is used at first base with the orange portion in foul territory and the white portion in fair territory.

Referring to 4. Above:

A batted ball that hits the white/fair portion is declared a fair ball. A batted ball that hits the orange/foul portion is declared a foul ball. A batted ball that hits the center of the double base is declared a fair ball because it hit a portion of the white base.

The defensive player (typically the first baseman) must use only the white/fair portion of the base at all times.

The offensive player must use only the orange/foul portion of the base on his/her first attempt at first base when a play is being made on him/her. This also applies to a batter-runner going to first base on a dropped third strike situation in fast pitch.

On a ball hit to the outfield with no play being made at first base, the offensive player may touch either portion of the base on his/her first attempt at first base.

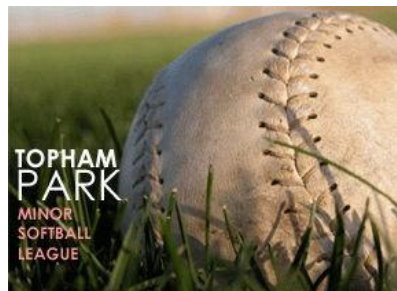
Once an offensive player has touched the orange/foul portion of the base on the first attempt at first base, he/she must then use the white/fair portion of the base:

- When returning to the base after overrunning first base
- When taking his/her position prior to the next pitch
- When tagging up on a fly ball

Points of Emphasis:

- The defensive player, provided any portion of the foot is touching any portion of the white/fair portion of the base, is considered to be in contact with base
- The offensive player, when required to use the orange/foul portion, provided any portion of the foot is touching any portion of the orange/foul portion of the base, is considered to be in contact with the base
- Once the offensive player has made his/her first attempt at first base, for simplicity sake the orange/foul portion of the base no longer exists





### 5-Pitch Rules

#### Coaching

- Coaches should wear coaches' shirts provided by the League. They must wear proper shoes, no sandals, if they are on the field. Parents helping out must also wear proper shoes
- At-bat coaches are allowed at first and third base
- Coaches for the team in the field may position themselves in the outfield
- Coaches may not touch or assist any player on the field while the ball is in play. Touching or assisting a player will result in an automatic out for the runner. This rule will be enforced after the third game
- No smoking of any kind is allowed anywhere in the park. This includes, but is not limited to, cigarettes, cigars, electronic cigarettes, vaporizers and cannabis
- As Coaches it is imperative that you set a good example. Swearing, arguments and insulting remarks are not allowed. Poor sportsmanship will not be tolerated. A coach may be asked to turn in their uniform if this arises
- Fun cheers will promote a good team concept and enhance the sportsmanship of the game
- Involve the parents as much as possible. This is **not** a baby-sitting service

#### Game Rules - Structure

- Game starting time – as per schedules handed out. A 15-minute delay is allowed for players to show up to make a team of at least eight. A team must field at least eight players or forfeit the game
- Each game will consist of two innings. We should be able to complete this in 1 hour and 15 minutes
- Rain out games will be considered a tie



**Game Rules – Team in the field**

- Each team will field one player in all normal softball positions. Extra players will be utilized in the outfield. Outfielders must not come past the infield line. The infield line is not marked but is considered to be ten-feet outside the base line
- All players are to play all positions except pitcher at the discretion of the Head Coach in cooperation with the child and the parents, this is a safety rule
- Players are to be discouraged from chasing the runner and are to throw the ball to the appropriate base. No tagging of runners is allowed
- Only players at the correct position can touch a base. Only the player on first base can make an out at first. Only the player on second and the shortstop can make a play at second base. The shortstop and player on third can make a play at third base and the catcher is the only player who can make a play at home plate. Players are encouraged to learn to play the various positions correctly
- A throw that goes out of bounds is considered a dead ball and runners will follow Rule 46. Out of bounds is when a ball is past the screen. Intentional throws out of bounds will advance all base runners to the base they were going to, plus one additional base
- Any legally caught fly ball, fair or foul, will result in the batter being called out. To eliminate base running confusion, the play will automatically stop and all base runners will return to the base they occupied at the time of the pitch. Infield fly rule does not apply
- Players are allowed to play first base or pitcher once per game but not both. Players must be rotated from the infield to the outfield every inning. The same players should not start in the infield each week. Player rotation sheets must be kept for every game
- Play will stop, once a player playing one of the base positions, has control of the ball and touches their base or the ball goes out of bounds. All other players must throw the ball to a base



### **Game Rules – Team at Bat**

- Each batter will receive five pitches from the pitching machine. If after five pitches the batter has not hit the ball, it will be considered a strikeout. The pitching machine must be operated by one of coaches (not a player). A youth coach operating the pitching machine must wear a helmet
- A batted ball striking the pitching machine or pitching machine operator will be considered a dead ball and the batter will be awarded first base
- A batted ball, after being touched by a fielder, or a thrown ball that hits the pitching machine is a live ball. Play will continue as if the ball had not hit the machine
- A ball that has been batted, thrown, or touched that lands and comes to rest within the pitching machine circle shall be declared a dead ball. If not already at first base, the batter will be awarded first base. All runners will be awarded a base based on their position when the dead ball was called
- The pitching machine operator may declare a NO PITCH if and only if the ball is obviously un-hittable. Note that the intent of this rule is to give five reasonable pitches. For example, in the event that the pitching machine pitches a ball that is not even close to reaching the plate, then this can be declared NO PITCH. Coaches are strongly encouraged NOT to abuse this rule. If a batter swings at an obviously un-hittable pitch, it shall still be declared a pitch
- Players will remain in their starting batting order for the entire game. Score sheets must reflect this. A player batting out of order cannot score a run. During each inning, all batters in the batting lineup will hit during their team's time at bat
- The third batter of the previous inning will start the batting order of the current inning. Both teams will bat an equal number of batters. If one team has eleven and the other twelve, then the first batter on the smaller team will bat a second time in the same inning
- The ball must be hit before any runner may leave their base. Any runner leading off is automatically out
- A foul ball is defined as: A hit ball that does not go beyond the ten-foot radius from home plate. In addition, normal foul ball rules are also applied
- The at bat team's base coaches are the base umpires and will make the decisions on close plays
- A runner that has passed the commitment line is considered to be in a force play situation and is out if the defensive player, while in possession of the ball, steps on the base ahead of the runner. Any runner that has passed the commitment line when the play is stopped and is not forced out, shall advance to the base they were running to. Any runner that has not passed the commitment line when the play has been stopped legally by the defensive team, shall return to the base they just left. Runners following may be forced back one base if they occupy the base the runner in front of them is returning to, even if they have reached it safely. The commitment line will be marked at the mid point between bases and will be judged by the base runner's coaches if not marked

## Give Respect to Get Respect



- Bat throwing is not allowed. One warning per team per game after which the batter will be called out
- Safety bag rule enforced
- No base stealing allowed. Aggressive base running is not considered against the rules (this is a common misconception)